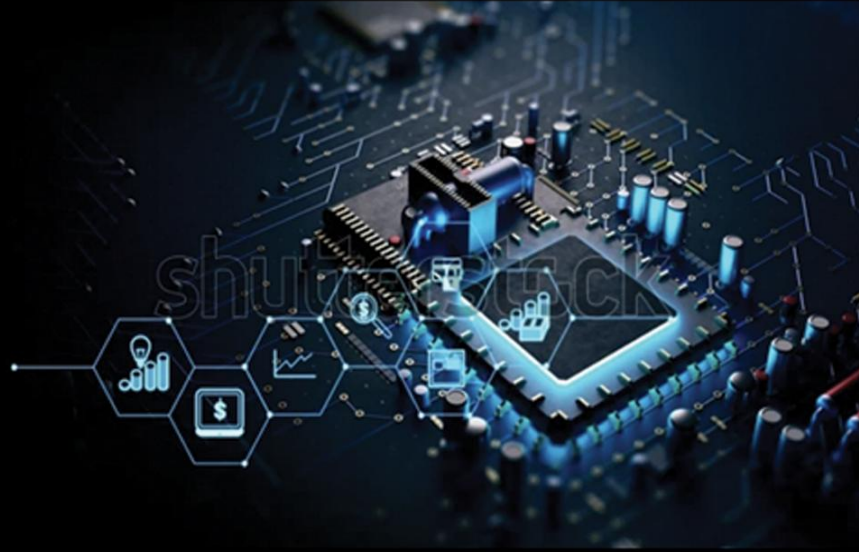


The Living Circuit : A Connected Office Experience



Key Design Elements from PCB

- **Linear Lighting Patterns:** Inspired by PCB tracks, these define circulation and spatial hierarchy.
- **Components :** Visually interesting fixtures modeled after PCB elements (resistors, capacitors, etc.).
- **Color Temperature Variation:** Warm-to-cool transitions to support user orientation and function.
- **Lighting Controls:** Smart, responsive systems that adjust based on time of day, occupancy, or specific use cases.

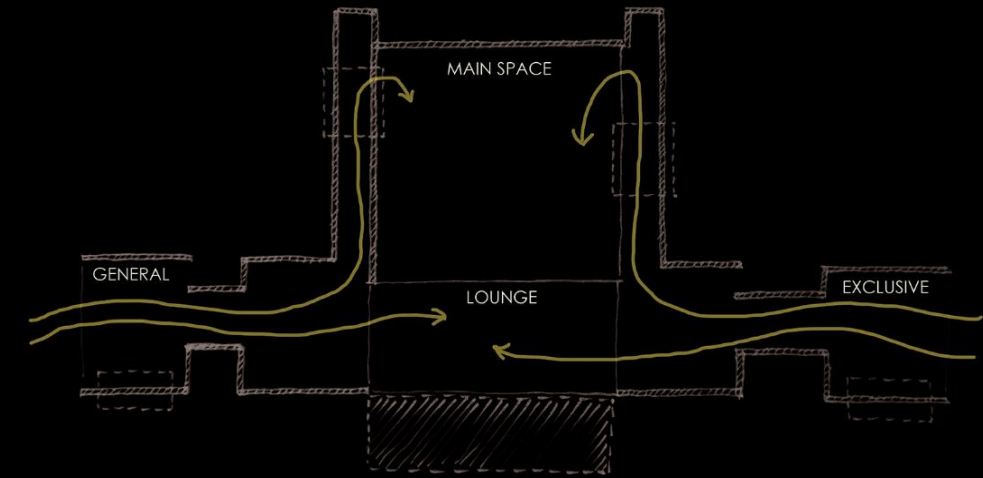
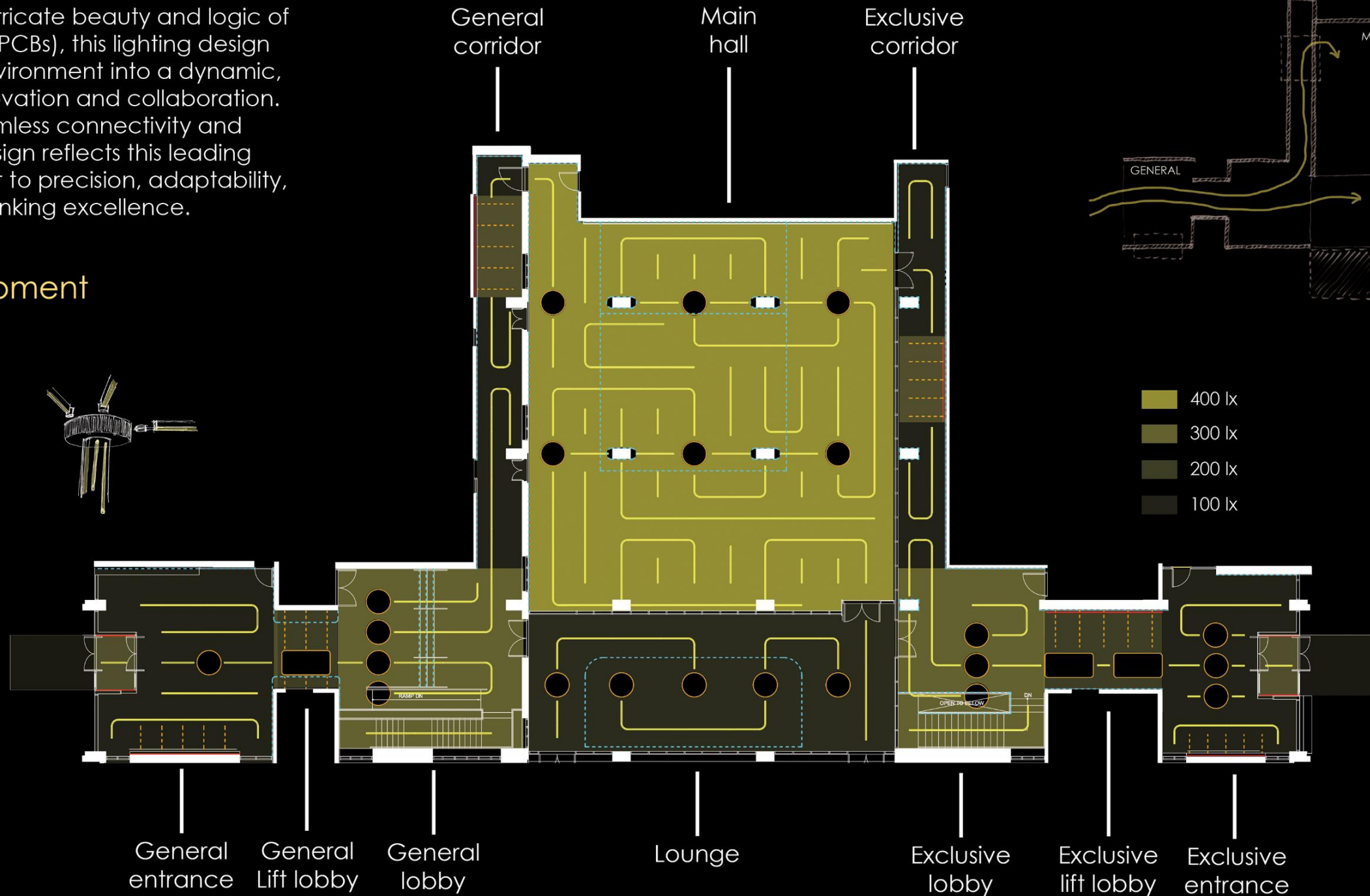
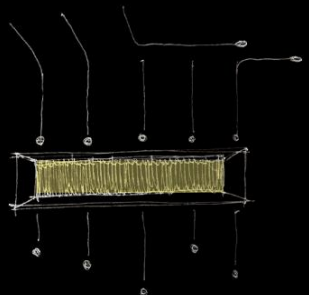
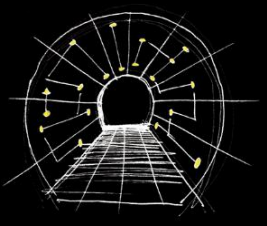
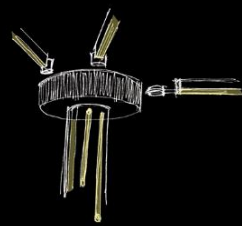
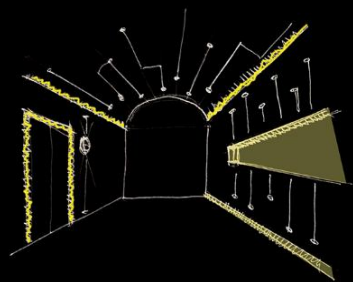
Lighting as Spatial Guidance

Lighting is a guiding element throughout the building, leading occupants from the main entrance to their final destinations by using light patterns to differentiate between general public areas and exclusive client zones. This journey is carefully choreographed through variations in lighting levels and patterns, creating a clear spatial progression from low light levels at the entry to a brighter climax at the core of the building.

Design inspired by the intricate beauty and logic of printed circuit boards (PCBs), this lighting design transforms the office environment into a dynamic, modern network of innovation and collaboration.

As PCBs enable seamless connectivity and precision, lighting design reflects this leading company's commitment to precision, adaptability, and forward-thinking excellence.

Design development

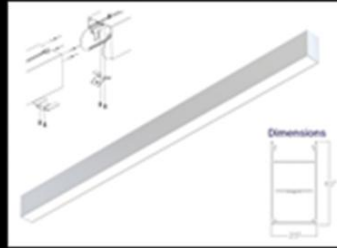


Minimal Intervention, Maximum Impact

As a renovation project, the design aims to make minimal changes to the existing building structure. All new lighting fixtures and material panels are designed to be surface-mounted, allowing installation without major structural alterations. This approach addresses the practical constraints of the project while delivering a cohesive and innovative lighting solution.

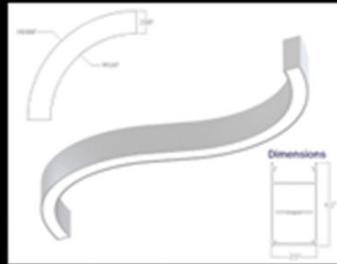
L1,L2,L3

LS1 - linear down light | directional
 Manufacture - Coronet LED fixtures
 L1- 2ft | L2 - 4ft | L3 - 8ft
 LS1 tunable white (3000K to 6500K)
 CRI 90 | low light output 400 lumen/ft
 Dimmable | Remote DMX control



C1

LS2 - curved down light | directional
 Manufacture - Coronet LED fixtures
 External radius 12 inches
 tunable white (3000K to 6500K)
 CRI 90 | low light output 400 lumen/ft
 Dimmable | Remote DMX control



P1

LUCIE.C - circle light | directional
 Manufacture - Coronet LED fixtures
 Diameter 2ft
 tunable white (3000K to 6500K)
 CRI 90 | low light output 4000 lumen
 Dimmable | Remote DMX control



P2

LUCIE.RDC - rounded corners
 Directional | 2ft X 8ft
 Manufacture - Coronet LED fixtures
 tunable white (3000K to 6500K)
 CRI 90 | low light output 8000 lumen
 Dimmable | Remote DMX control



Lighting layout with fixture details

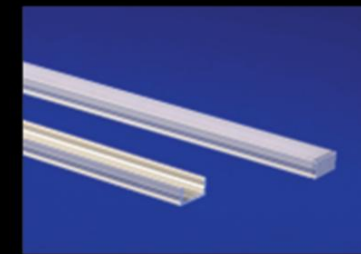
All light fixtures used here are dimmable, enabling light levels to be adjusted according to the lighting scheme to create a spatial journey as needed. Additionally, users can also customize the lighting during operation to match their preferences.

WL



HYN1409F - curved wall recessed decorative light
 Manufacture - ENO Light
 0.55 in x 0.35 in - Up to 18 ft length
 tunable white (3000K to 6500K)
 CRI 90 | low light output 100 lumen/ft
 Dimmable

FL



THIN-ST - cove light floor
 Manufacture - QTL
 0.28 in x 0.3 in - Up to 4 ft length
 tunable white (3000K to 6500K)
 CRI 90 | low light output 150 lumen/ft
 Dimmable

CL

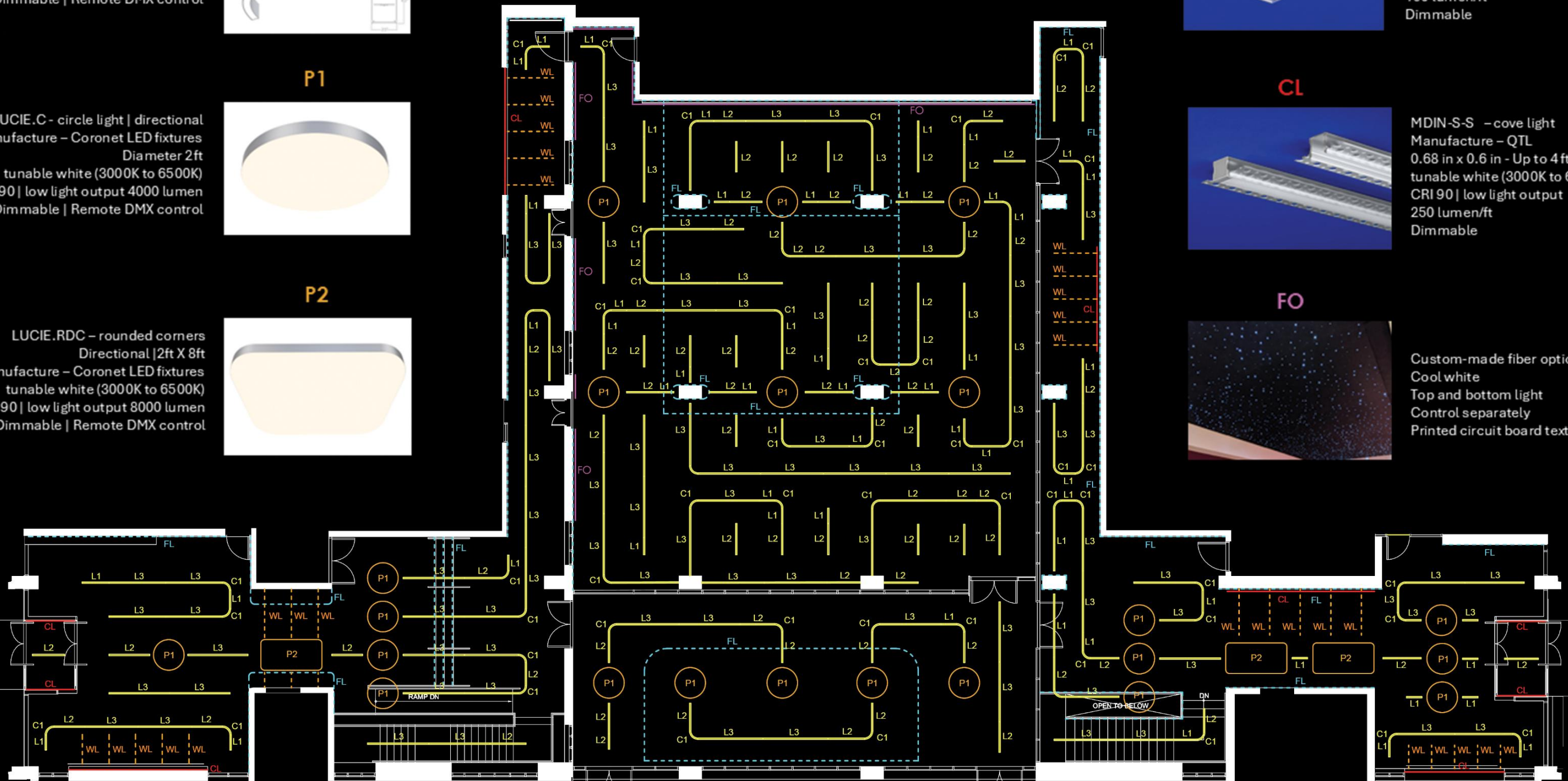


MDIN-S-S - cove light
 Manufacture - QTL
 0.68 in x 0.6 in - Up to 4 ft length
 tunable white (3000K to 6500K)
 CRI 90 | low light output 250 lumen/ft
 Dimmable

FO



Custom-made fiber optic panels
 Cool white
 Top and bottom light
 Control separately
 Printed circuit board texture



EXCLUSIVE

The exclusive client experience begins at the exclusive Lobby, where lighting sets a tone of elegance and welcome. A warm ambient glow combined with vertical accents subtly guides visitors, establishing the foundation for a refined spatial narrative. In the Lift Lobby, the lighting level increases slightly to create a brighter, more focused environment. Draws attention to a trophy wall feature highlighted through carefully positioned accent lighting. The path continues into the Exclusive Corridor; a darker ambient setting creates contrast and drama. At the same time, the integrated art wall becomes a feature with lighting in a dark, warm lighting environment. The main ambient lighting pattern guides them toward their final destination throughout the journey.



Exclusive lift lobby

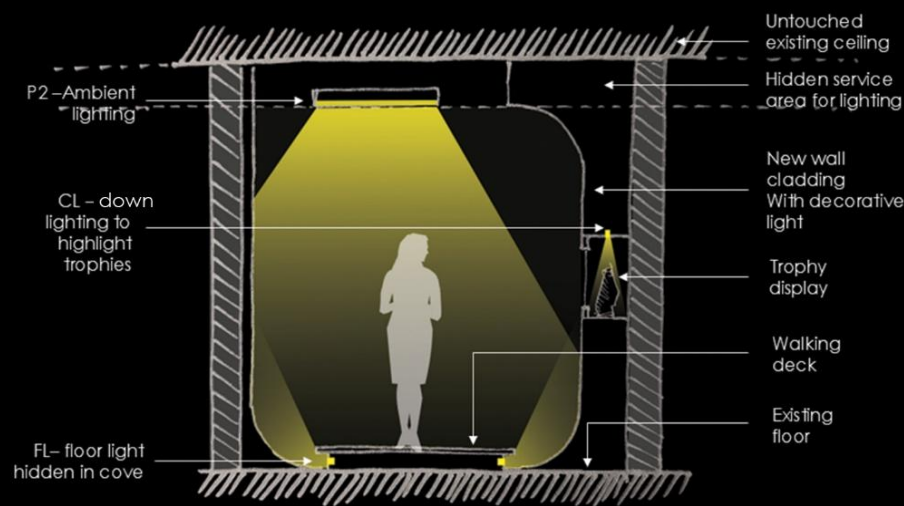


Exclusive corridor



Exclusive art wall

SECTION - EXCLUSIVE LIFT LOBBY



GENERAL

The general lobby serves as the primary entrance for both workers and clients, with the lighting design guiding them seamlessly to their destination. A strategic combination of accent and ambient lighting enhances spatial perception, creating a welcoming and intuitive navigation experience.



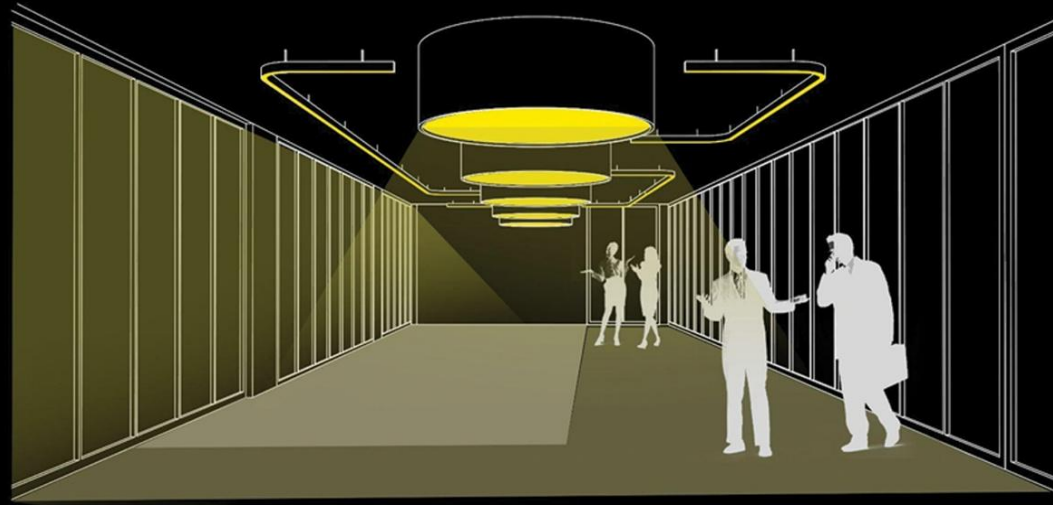
General lift lobby



General lobby

LOUNGE

The lounge connects the exclusive and general lobbies, seamlessly opening to an outdoor courtyard. The lighting design harmonizes with natural light, creating a balanced ambiance. A subtle yet effective blend of artificial lighting adapts to different situations based on the intake of natural light from large windows, ensuring both functionality and aesthetic appeal. Furthermore, the low light levels in the lounge help to highlight the main hall to the outside courtyard.



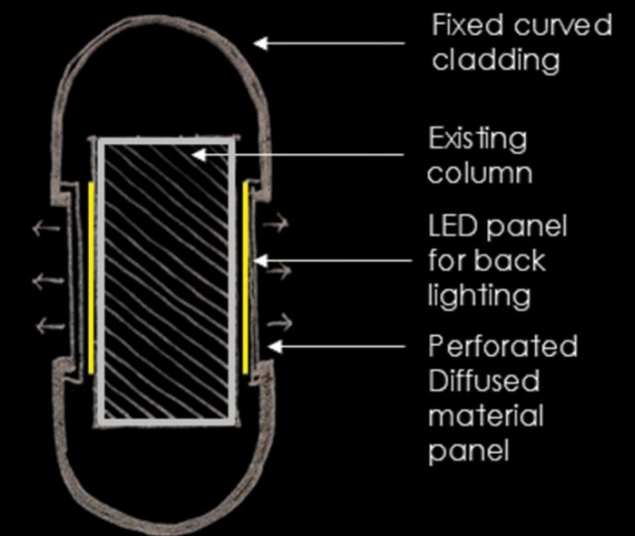
MAIN HALL AS A DINING SPACE

When the main hall functions as a general dining space, layered lighting fixtures allow for adjustable light levels and color temperatures to meet specific requirements. The lighting design enhances the overall spatial quality, introducing a unique and contemporary approach to an otherwise typical setting. Linear pendant lighting creates the ambient layer, and floor, column, and wall-mounted features create accent lighting to balance the space and create a functional,



COLUMN DETAIL - SECTION

ELEVATION



An existing structural column is transformed into a sculptural focal point by wrapping it with curved cladding and backlit perforated panels. This design intervention not only enhances the aesthetic balance of the main space but also draws inspiration from the layered complexity of printed circuit boards (PCBs). The feature integrates seamlessly into the lighting narrative, with adjustable light levels and color tones that can shift according to the space's function, offering visual interest and functional adaptability.

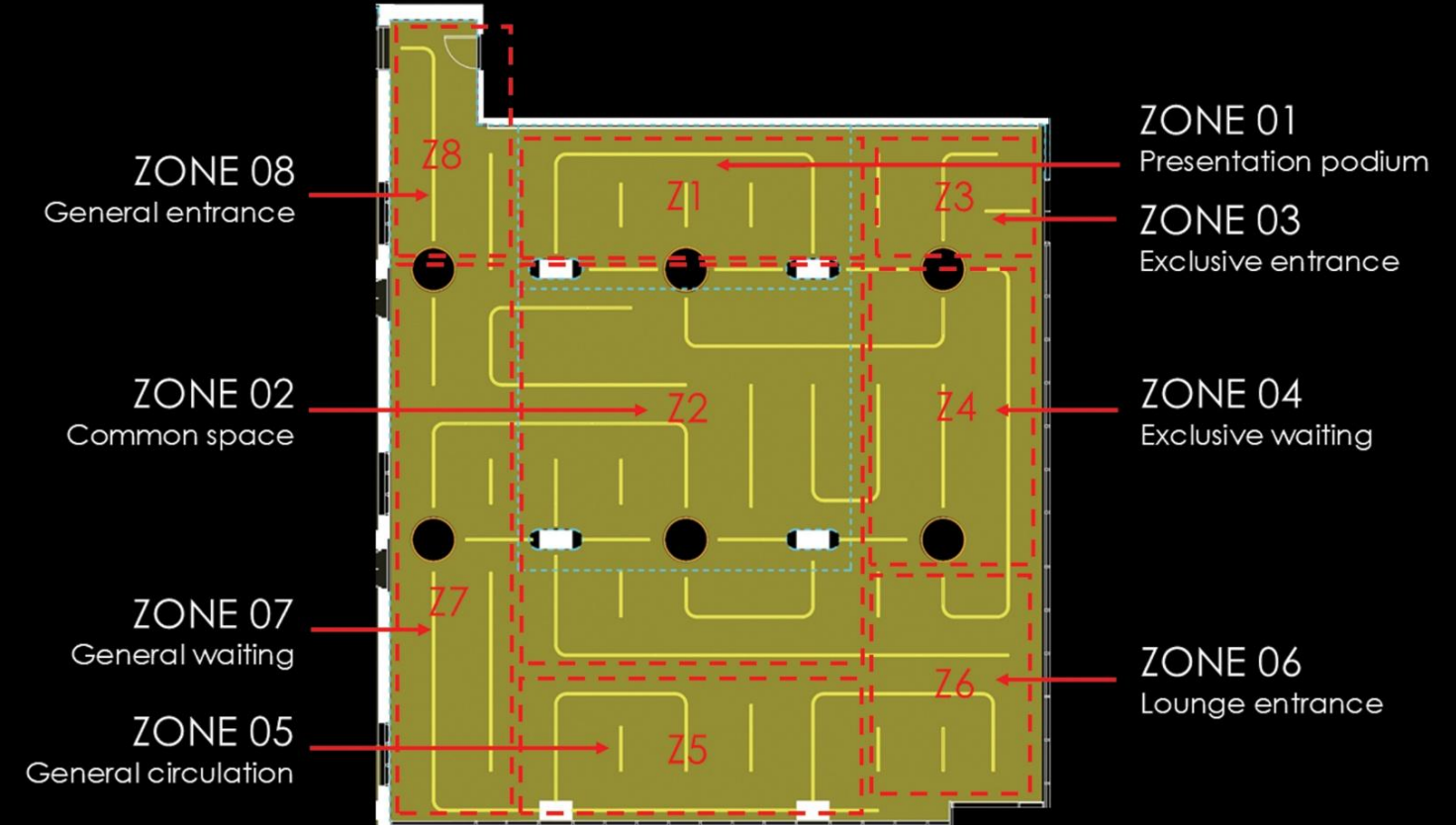
MAIN HALL PRESENTATION MODE

When the main hall functions as a presentation space, the lighting design creates a customized ambiance by maintaining low ambient lighting while highlighting the stage. Adjustments in the layered lighting system ensure optimal visibility and focus. The overall lighting design helps achieve the required illumination levels while defining the boundaries of the entire space.



ZONING

The main space lighting is divided into independently controlled zones, allowing for customized lighting scenarios based on functional needs. This zoning system facilitates seamless transitions between different atmospheres, supporting a multifunctional space that can adapt to various uses with ease and precision.



MAIN HALL PARTY MODE

When the main hall serves as a party space, layered lighting fixtures provide adjustable brightness and dynamic color transitions suited to the event's atmosphere. The entire internal lighting system can synchronize with music and rhythmic patterns, creating an immersive and energetic environment. To extend this experience beyond the main hall, the building's entrance and circulation areas can also change their lighting colors to match the party vibe, transforming the entire space into a joyful, cohesive atmosphere using the existing lighting infrastructure.

