

# Howard Brandston Student Lighting Competition

Transcend Excellence is more than a lighting concept—it's a vision of growth, identity, and unity. Our design moves upward and forward, physically elevating each space while emotionally drawing users into a refined, inspiring experience. Our art gallery hallway showcases works by Australian artists. Carefully considered lighting highlights each piece, celebrating local talent while maintaining cohesion with the architectural narrative the colors incorporated throughout the project scope.

## Executive Awards Rendering



Every element has been crafted to elevate the experience. Light doesn't just illuminate the spaces, it sculpts, guides, and connects the users to each other, their environment and whatever event brings them to the space. Through a thoughtful blend of native materials, layered lighting, and expressive form, we create an environment that reflects ambition and preeminence—ultimately fulfilling our vision to Transcend Excellence.

Material selection plays a central role in anchoring the design to its location. Australian gum wood offers warmth and texture, while white, blue, and orange onyx connect to the country's diverse natural landscapes—the soft tones of native stone, the red of the soil, and the vivid blues of the Great Barrier Reef. We also utilize the spectacular translucent properties of the white onyx stone to sculpt the main feature of the executive lobby, the company awards showcase. These materials interact with the lighting to create moments of radiance, contrast, and discovery throughout the entire spatial experience.

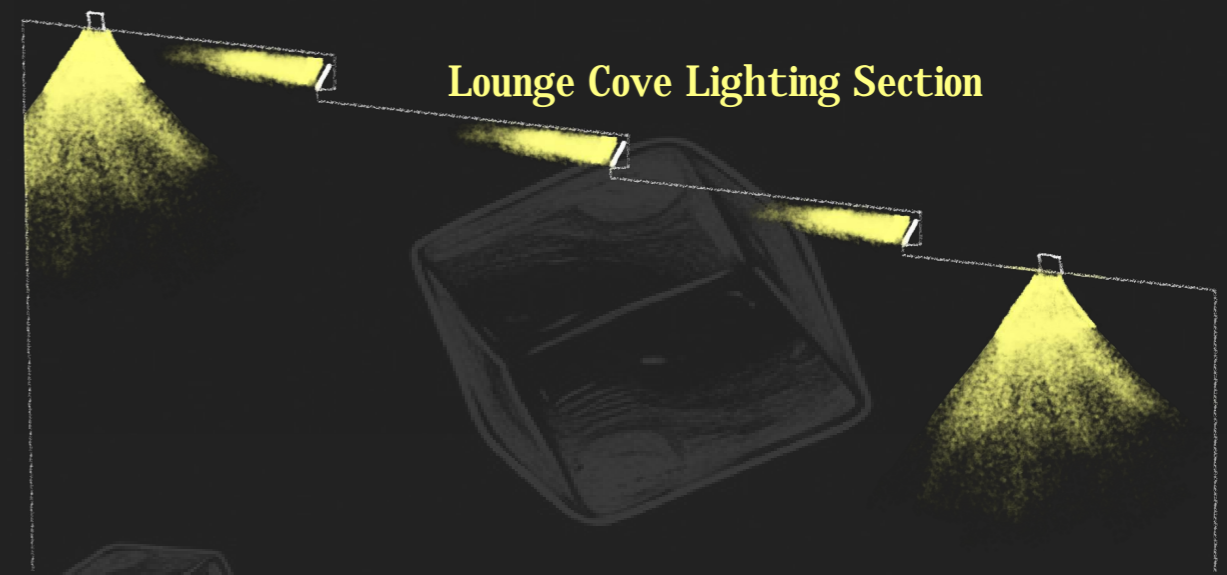


Executive Reception Rendering

# Transcend Excellence



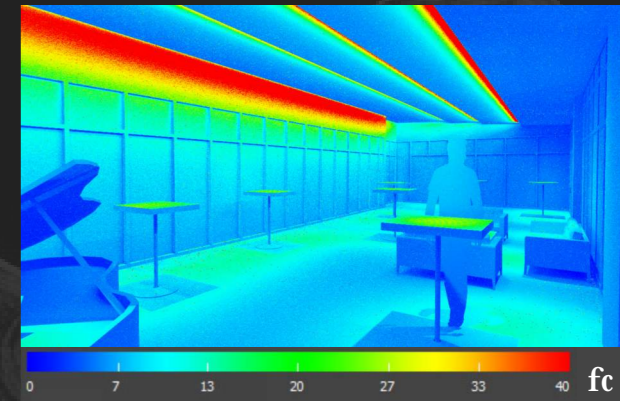
Lounge Rendering



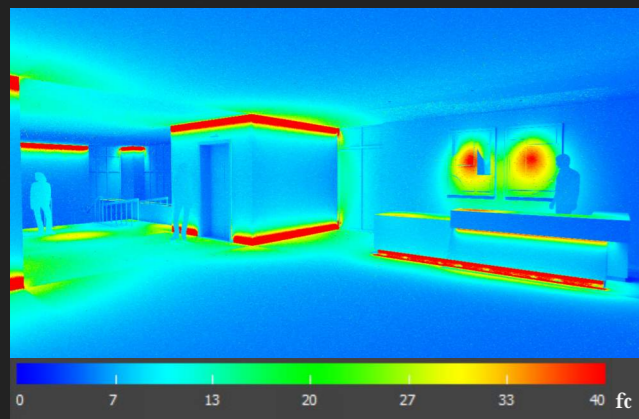
Lounge Cove Lighting Section

At the center of the two lobbies, the lounge provides a calm place to collect ones thoughts and interact with others in a comfortable environment. Acting as a subdued environment between the bustling outdoors and the busy multipurpose space, the lounge features warmer lighting, lots of which is indirect, and our featured Australian Gum Wood cocktail tables.

Lounge Pseudo Color

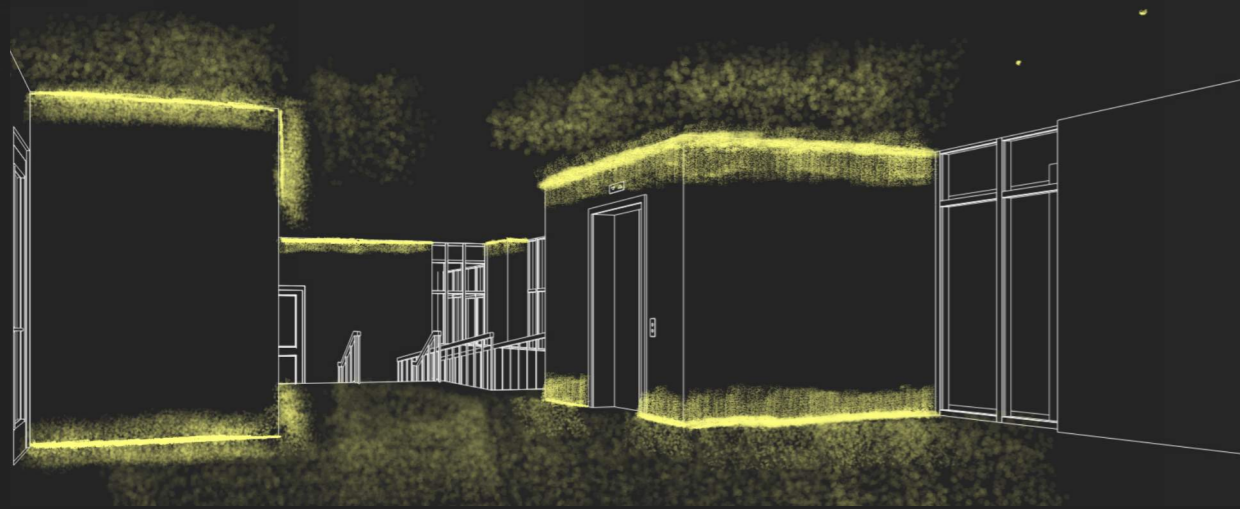


General Lobby Pseudo Color



Entering from the general lobby, the patrons still get the feelings of transcendence and excellence. The cubes grazed on either side of the path into the space off the user guidance, while the reception area demands the attention of those who enter.

General Lobby Massing

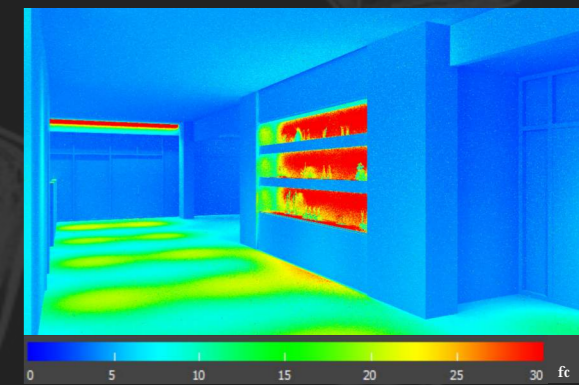
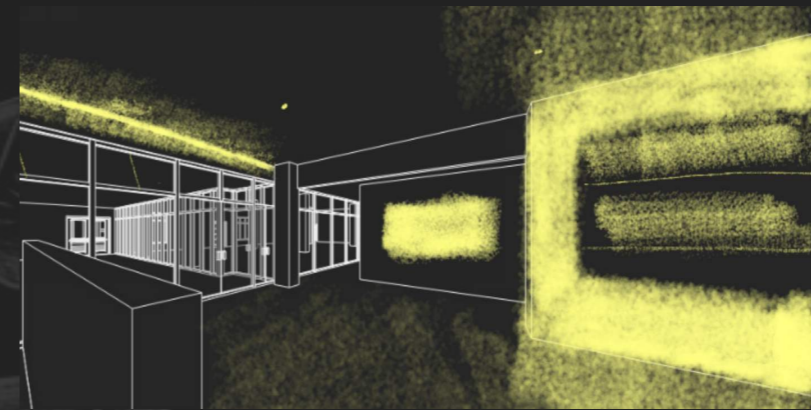


General Lobby Rendering

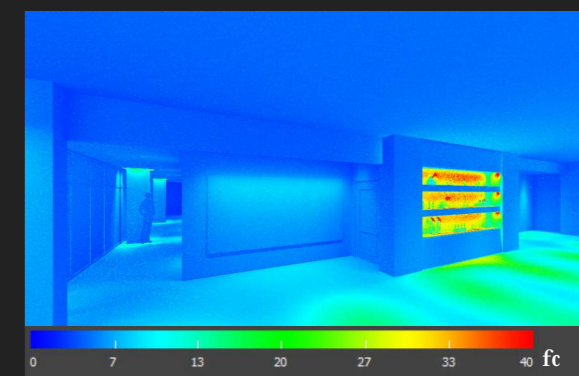
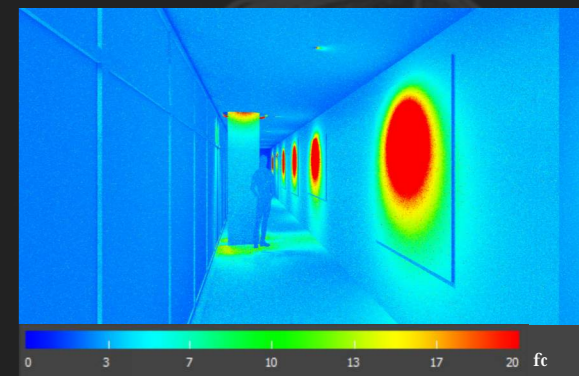
# Executive Lobby



As the end user enters deeper into the space through the executive lobby, guided by the glow of the awards case to their right, they reach the conjunction of space at the corner of the art gallery hall.



Juxtaposition is key in the executive art hall. Evident both in the render above, and in the lobby rendering on the prior page, the art gallery hall maintains a beautiful light balance which highlights the Australian artists' works while also maintaining levels needed for visibility. Above all, the light from the adjacent multipurpose space does not impede.

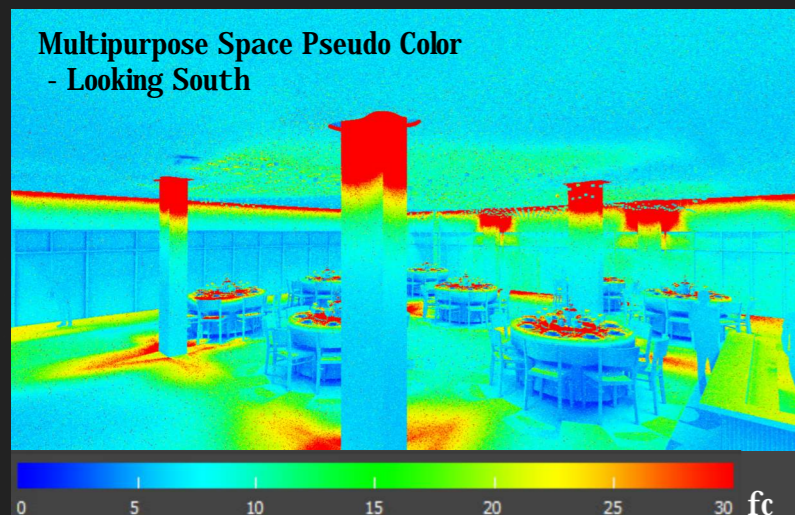
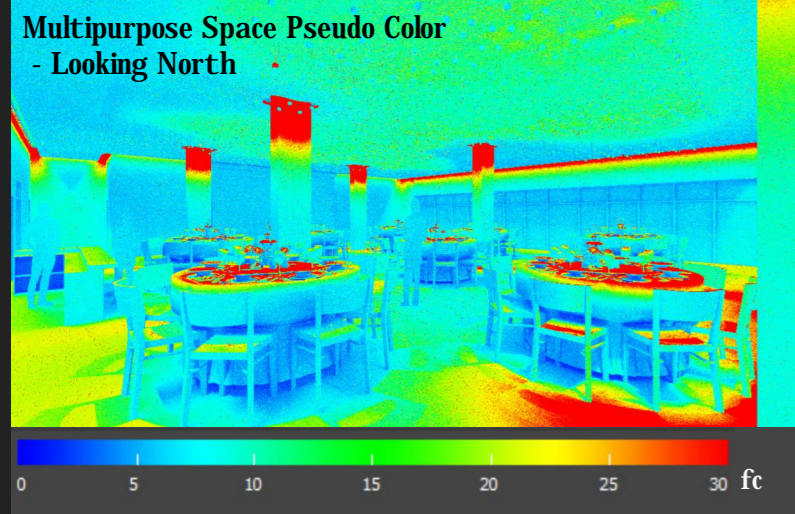


# Multipurpose Rendering - Looking North



# Multipurpose Space

As patrons enter the surrounding spaces and ultimately the multipurpose space itself, the upward draw of the feature fixture, a custom installation featuring over 700 individual lamps makes itself known. Waves of light bounding up and down in their path to excellence light the space. Reflections in the stretched fabric ceiling only add to the height of the space allowing the boundaries to transcend their real limits.



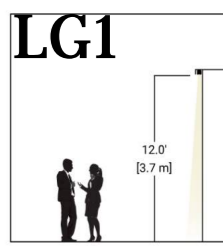
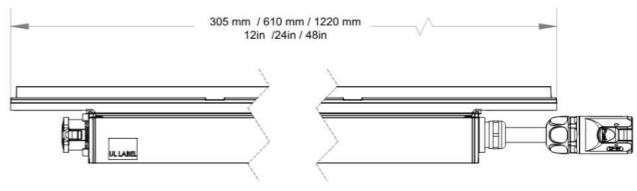
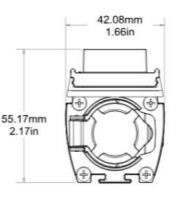
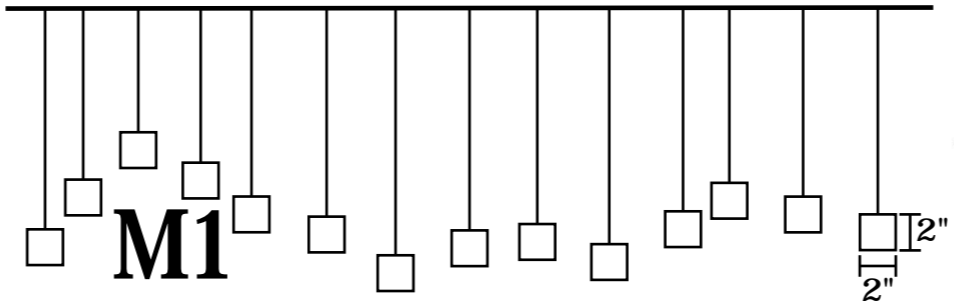
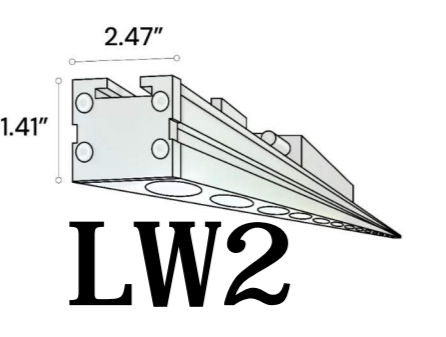
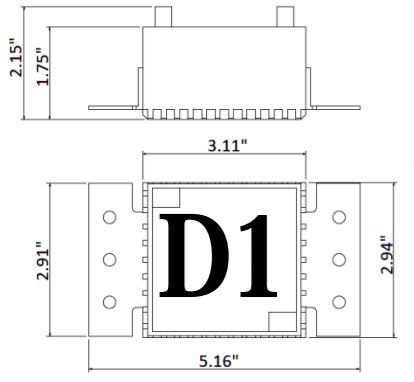
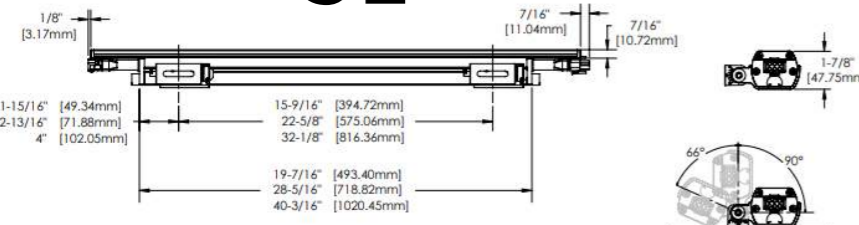
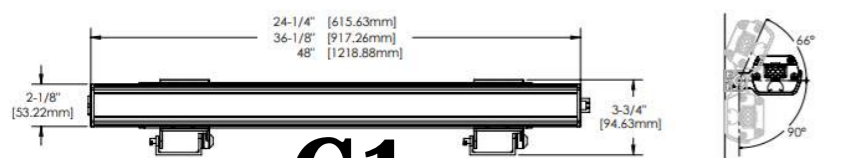
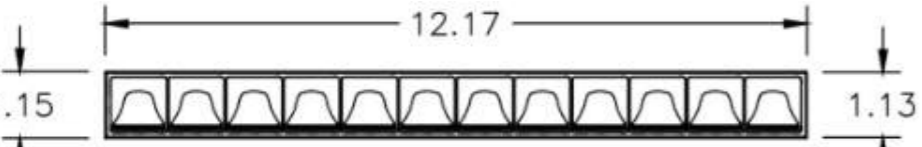
# Multipurpose Rendering - Looking South

# Luminaire Schedule

FIXTURE TAG	MANUFACTURER	CATALOG NUMBER	PER FOOT	TOTAL LUMENS	LUMENS PER FT	WATTS	WATTS PER FT	CCT	VOLTAGE	DESCRIPTION	MOUNTING	DIMMING	FINISH	REMARKS
LW1	ACULUX	LN1SQWW-12C-35K-80CRI-UGZ-MVOLT-CP-ICAT-W-WHSF		1890	N/A	23.4	N/A	35K	120-277V	2 Cell Linear Recessed Wall Wash	Recessed	0-10V	White	
LG1	Cooper Lighting Solutions	GRZ-10L-935-50x60-OD-UNV-STD-SM-STD-4F	X	3817	954	38	9.5	35K	120-277V	Wall Grazer	Recessed	0-10V	White	
T1	ELCO	E50-2430-CC	X	3880	485	40	5	30K	24V	Indoor LED Tape Light	Surface	24V dimmable driver	N/A	Requires 120V to input of dimmable driver
LW2	Alcon Lighting	11245-4-35-35K-WH-ST-LC1	X	3600	900	36	9	35K	120-277V	Linear Wall Wash Direct	Surface	0-10V	White	
C1	Mark Architectural Lighting	MCV502-LLP-80FT-MSL4-M500FMC-90CRI-35K-300LMF-120X120DEG-MIN1*-MVOLT-WTP-ZT-M500WBXL	X	1414	300	10.5	2.625	35K	120-277V	Linear Cove Grazer	Surface	0-10V	White	
D1	Alcon Lighting	14143-R-WH		700	N/A	10	N/A	35K	120-277V	Recessed Downlight	Recessed	Triac dims to 10%	White	
D2	Alcon Lighting	14031-1-12-35K-UNI-45		600	N/A	12	N/A	35K	120-277V	Recessed Downlight	Recessed	0-10V	White	
M1	GrayPants	CU-500-CU-35-CU-SP-CU-SH		TBD	N/A	TBD	N/A	35K	120-277V	Multipurpose Accent Pendants	Pendant	0-10V	White	
P1	Alcon Lighting	12168-7-2-24-35K-SL-Cx-010	X	1848	528	63	4.5	35K	120V	Lobby Pendant	Pendant	0-10V	Silver	
QS1	QTL Lighting	QS24-26W-DRY-35		2929	N/A	24.96	N/A	35K	24V	Backlight LED Sheet	Surface	0-10V	N/A	Requires 120V to input of 24V driver

## Lighting Fixture Details

### LW1



## Lighting Plan

